

jcMoto



INSTALLATION GUIDE

Hero X-pulse Footrest Hanger

www.jcmoto.in

Parts Included

- 1 x LHS Foot-rest mount
- 1 x RHS Foot-rest mount
- 2 x Bottom mounting bolts
- 1 x Brake pedal pivot bolt and lock nut
- 1 x Swing arm pivot axle
- 1 x Brake spring
- 1 x Go-Fast stickers

WARNING: Make sure all parts are installed after the Motorcycle has cooled down and is at ambient environmental temperature.





STEP 1

Using a 12mm Socket or wrench, remove the kick start lever.



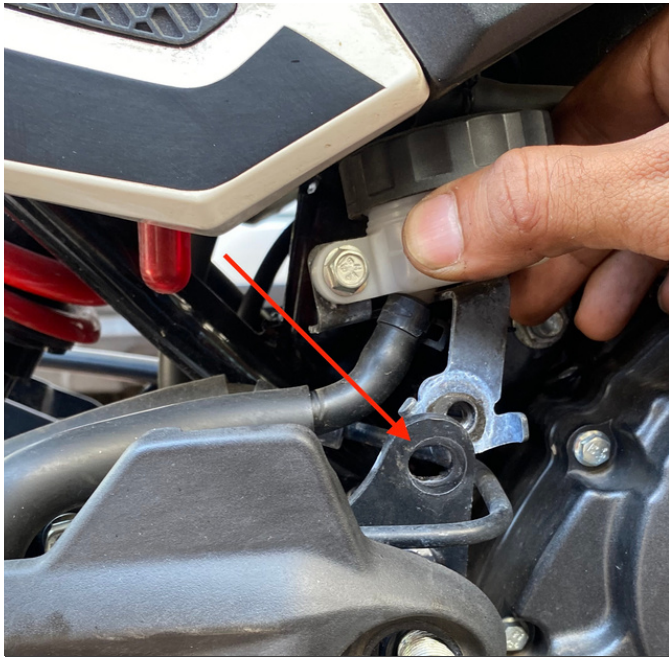
STEP 2

Remove the 22mm Swing arm axle nut



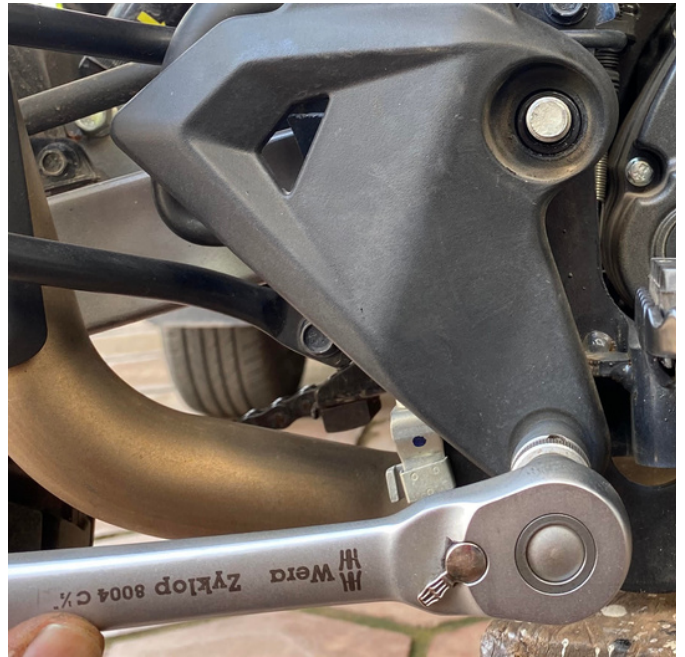
STEP 3

Loosen the 14mm Bolt that's holding the brake lever pivot and carefully let the Plastic shield rotate downwards to reveal the brake master cylinder and reservoir



STEP 4

Undo the brake reservoir bolt and leave the reservoir resting on the the swingarm



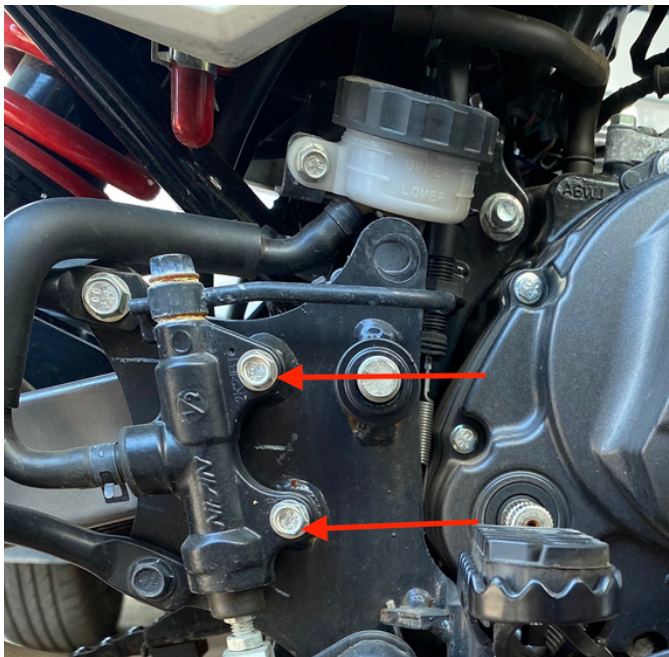
STEP 5

Remove the brake pivot bolt.



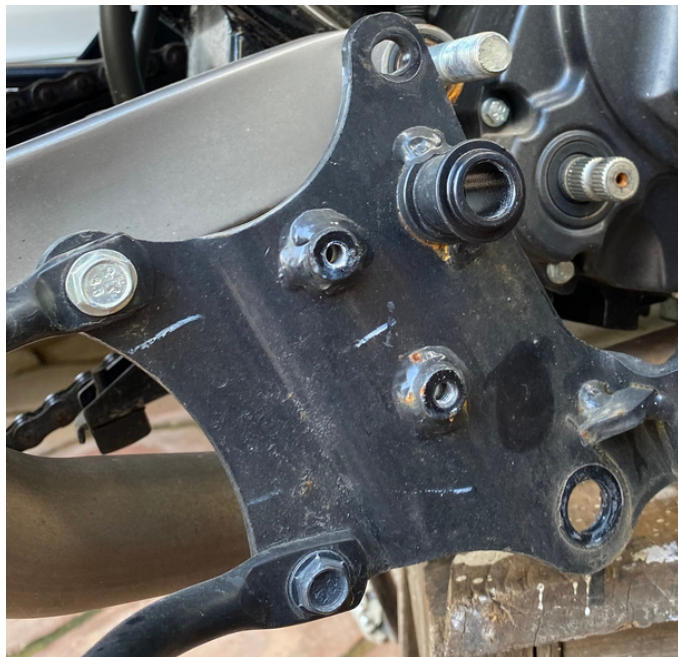
STEP 6

Remove the black plastic cover, original pivot bolt and one of the black stepped washers.



STEP 7

Remove the two 6mm bolts holding the master cylinder in place.



STEP 8

Remove the Stock footrest hangers



STEP 9

Take the LHS jcMoto footrest hanger and place it on the swing arm axle.

Use the Black M10 allen key bolt to secure it at the lower mounting point.



STEP 10

Install the brake lever using the new M10 pivot bolt and nylock nut provided in the kit. Ensure that the stepped washer and brake spring are installed correctly and after torquing the bolt to 30NM, the brake pedal does not bind and pivots freely.



STEP 11

Install the Brake Master cylinder using the two 6 mm bolts



STEP 12

It may be necessary to loosen the Master Cylinder Banjo bolt and pivot the brake line.

WARNING:

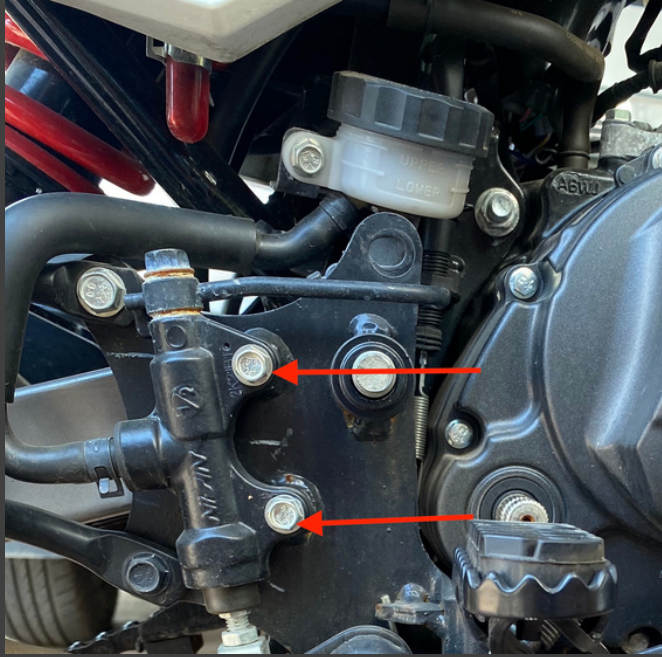
Bleeding the brake system may be necessary after Step 12. If you are at any time unsure of this, please consult a trained technician as this could result in a serious accident



STEP 13

Next install the New Swing arm Pivot Axle supplied in the kit from the Right side of the motorcycle. The Stock swing arm axle is installed from left to right on the motorcycle. The new axles will be installed from Right to Left. This enables one to install the axle easily. If you remove the stock axle completely before installing the new axle, the install is much harder as you will have to put the motorcycle on a stand and you risk having to align the rear swing arm with the frame and the footrest mounts.

DO NOT AT ANY POINT REMOVE THE STOCK AXLE COMPLETELY WITHOUT INSERTING THE NEW AXLE.



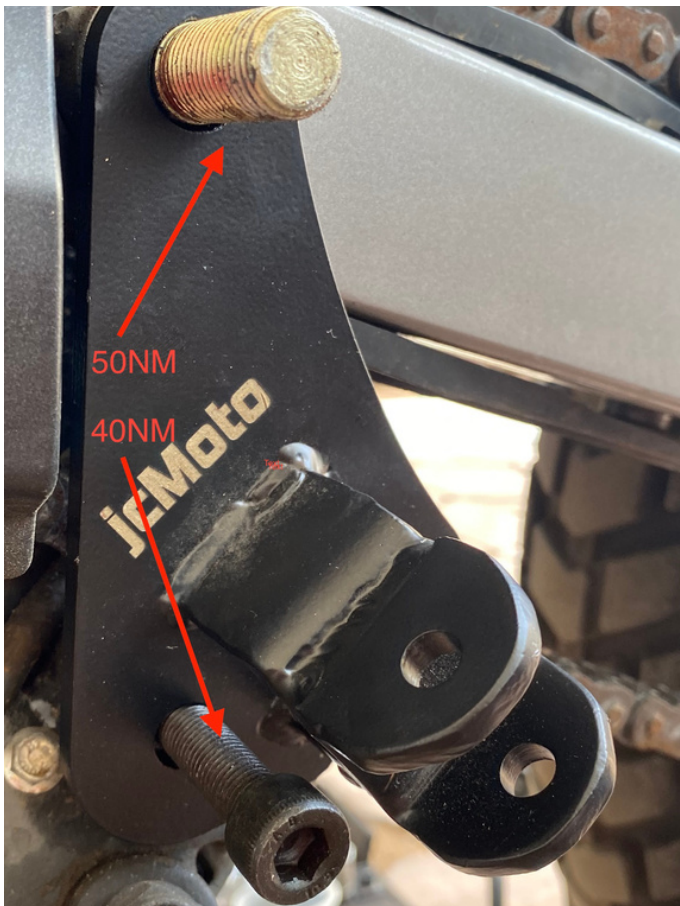
STEP 14

Bend the tab of the rear brake spring forward, and install the new brake spring provided in the kit.



STEP 15

Remove the 14mm lower mounting bolt on the stock Stock LHS footrest hanger, and remove the footrest hanger



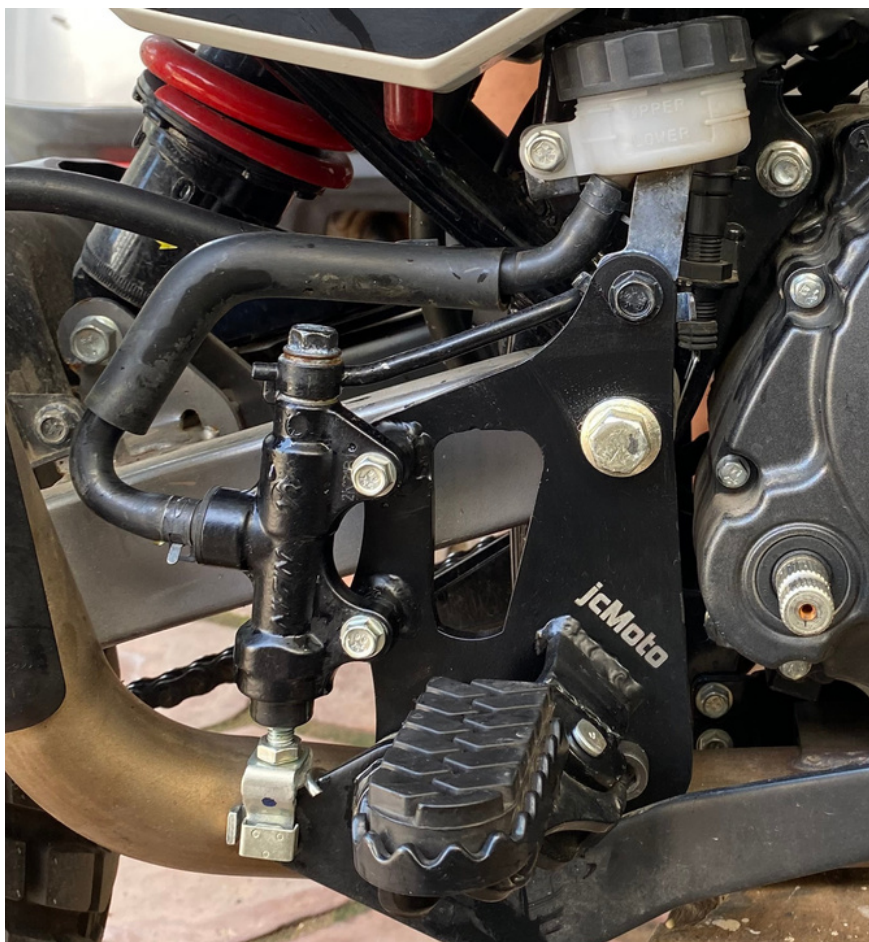
STEP 16

Install the LHS jcMoto footrest hanger on the swing arm pivot axle and torque the 22mm swing arm axle bolt and the M10 lower mount bolt (40NM)



STEP 17

Remove the Stock LHS and RHS footpegs from the stock hangers along with springs and clevis pins and cotter pins and install them on the respective sides on the jcMoto foot rest hangers.



STEP 18

Ensure all securing bolts are torqued to spec. Lower mount bolts - M10:40NM
Swing arm pivot bolt 55NM

GO

BRAAAAAAPPPPP!!!!

jcMoto

X-pulse range

Turn your Xpulse into a serious enduro motorcycle!



Hero XPulse Top Triple Clamp

For precise handling and ergonomics



Hero XPulse Bash Plate

For unparalleled crash protection when on the trails

Get in touch with us!



+91 9820602435



admin@jcmoto.in



www.jcmoto.in

jcMoto

